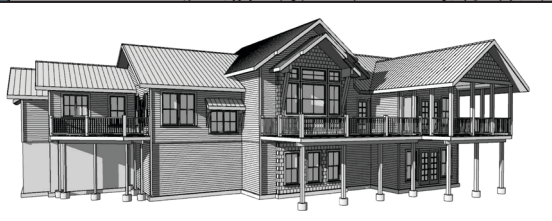
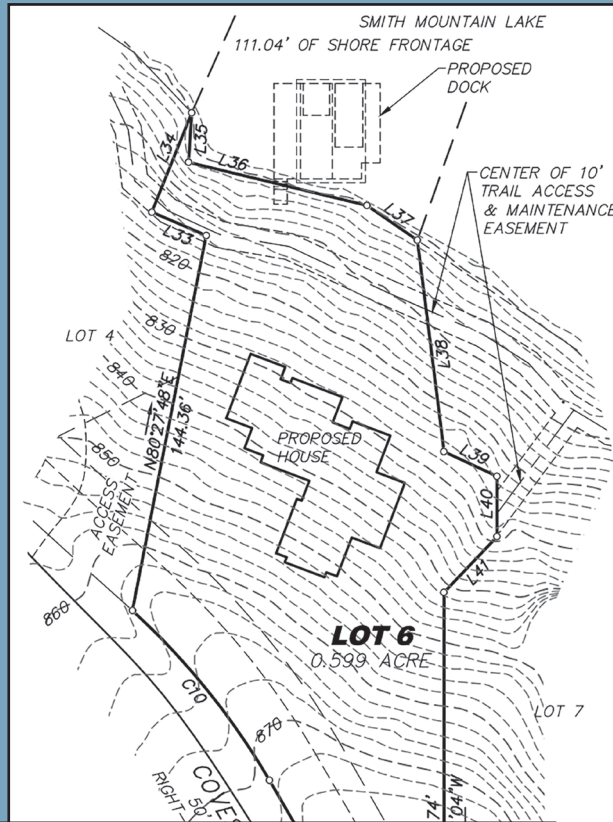


WELCOME TO THE COVES

Mountain Retreat Living
"Poplar Cove" Designer Home Package

Proposed Home Site Build



MAKE US YOUR NATURAL HABITAT



Explore this beautiful model,
and decide if it should be
your family's lake home!

Life at the Coves provides:

- Historic Welcome Center
- World Class Performing Arts Venue
- 5 Miles of Hiking & Biking trails
- Social & Water Sports Docks
- Open-air Pavilions & Fire Pits
- 5G Wi-Fi coverage
- SouthLake Spa Wellness Center
- Solar Arrays for supplemental power
- 30+ Acres of Green Space
- Disk Golf Course (Opening 2023)

covesatsml.com

(Learn about our private community)

mountainretreatliving.com

(Meet our preferred custom home builder)



480 COVES ROAD MODEL HOME FOR SALE

Rendering of residential
construction in process

*Rendering is for consideration only. Actual specs may vary from those depicted

Text 540-717-0000

E-Mail info@covesatsml.com
to schedule a call or set up a private tour

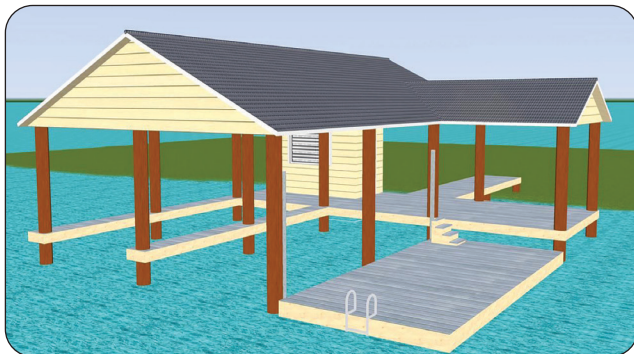


THIS MODEL HOME AVAILABLE FOR 2022 OCCUPANCY

480 Coves Road
Mountain Retreat Living
"Poplar Cove" Designer Home Package



This waterfront home was designed specifically to capture the long water views. The open floor plan provides for independent living within both the upper and lower levels with spacious master bedroom suites, with additional finished bedrooms and walkout covered outdoor living spaces. A rear screened porch and ample deck space offers easy access to the lake and great spot for outdoor entertaining. Home features include: Pella windows, James Hardie siding, poplar bark shakes, timber frame accents, hardwood flooring, custom cabinetry, granite countertops, and a convenient U-Shaped driveway.



Additionally: 1500 s.f. Dock Package, 450 s.f. covered garage, and a main deck hottub are available as purchase options.

